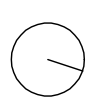
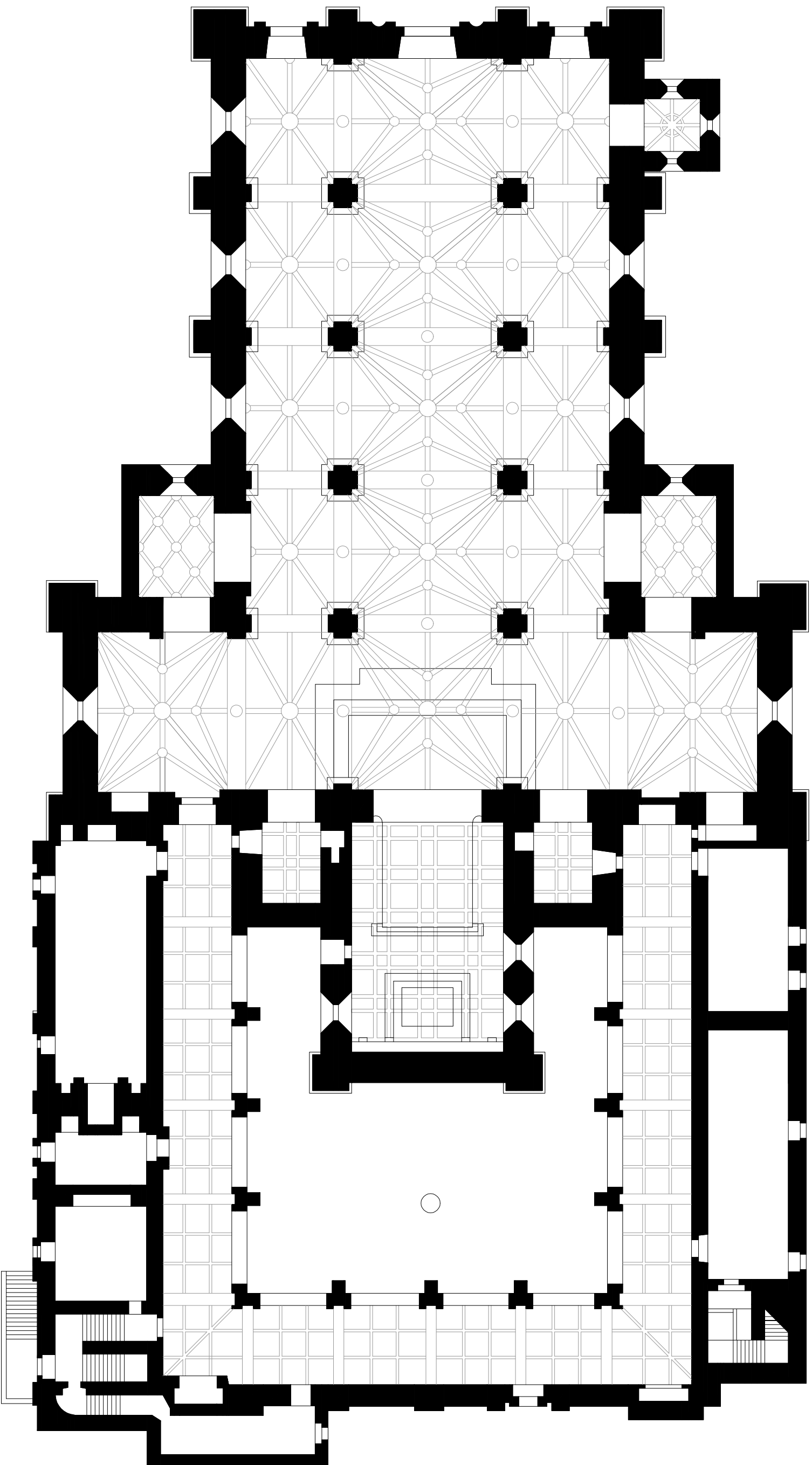


# **Levantamento da SÉ DE LEIRIA**

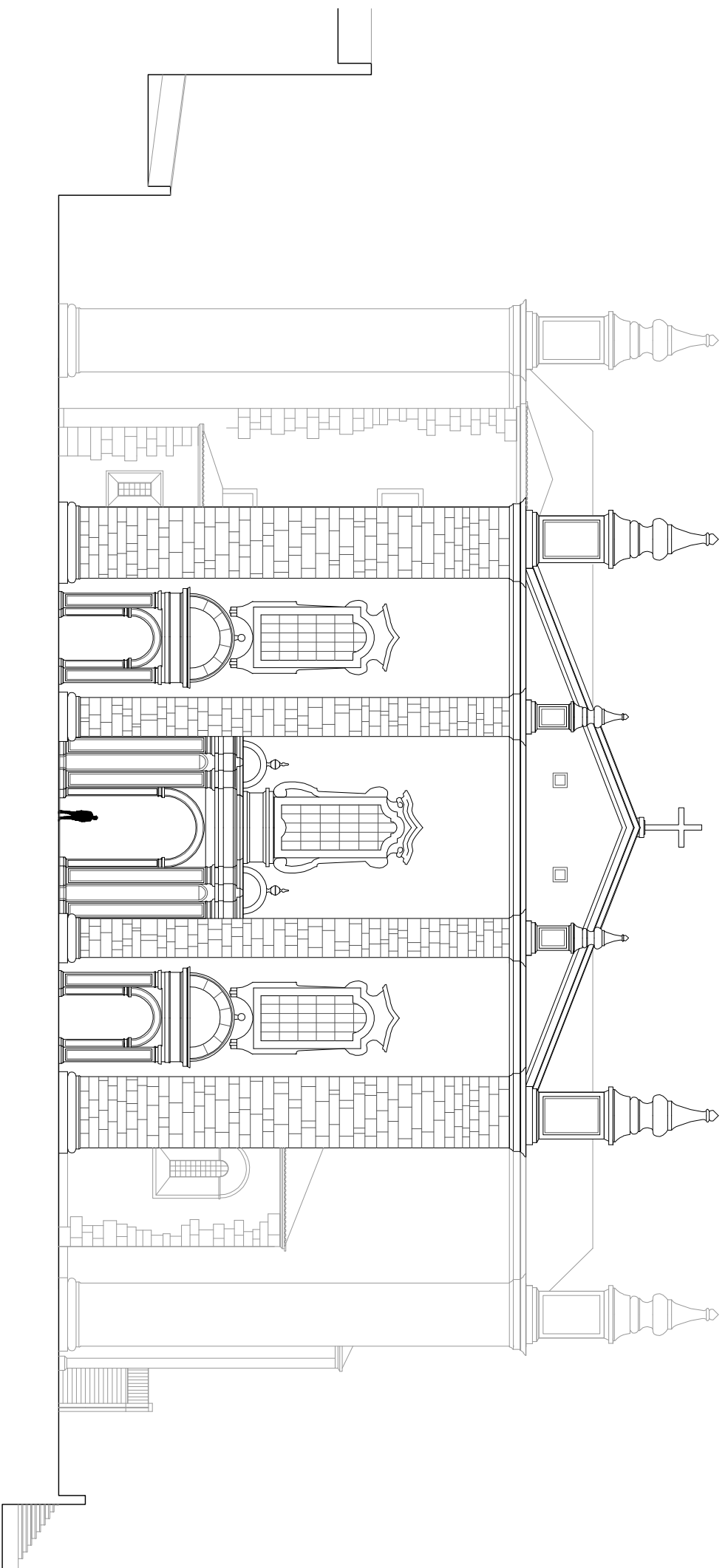
***Desenhos do trabalho A Sé Catedral de Leiria, realizado em grupo para a disciplina de História da Arquitectura Portuguesa, Dnaq, 2007/2008 e reformulados em alguns aspectos e medidas pela autora da presente dissertação.***



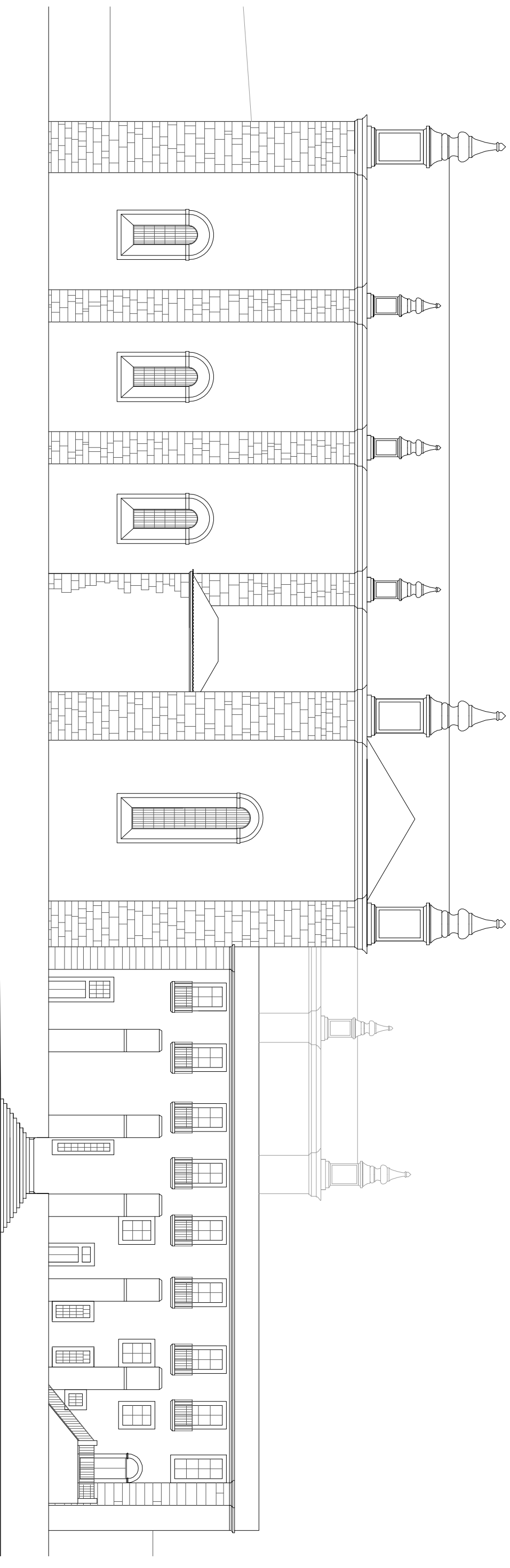
**As Sés Joaninas \_ Arquitectura episcopal portuguesa na segunda metade do século XVI**

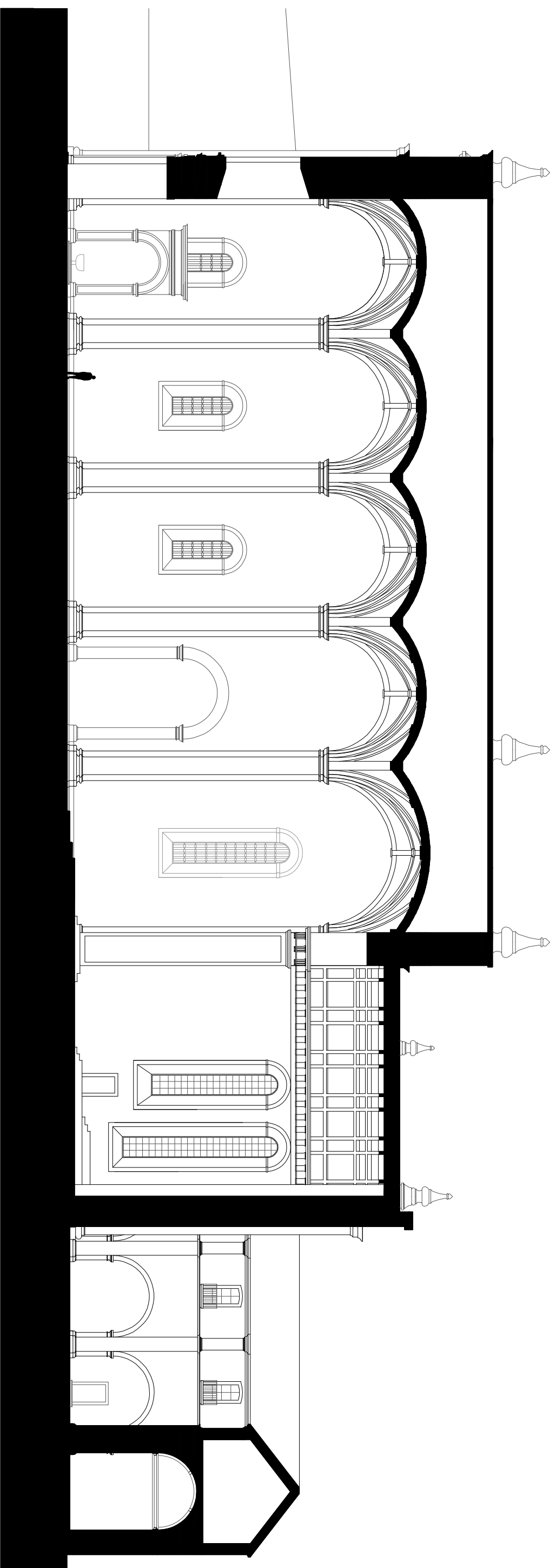
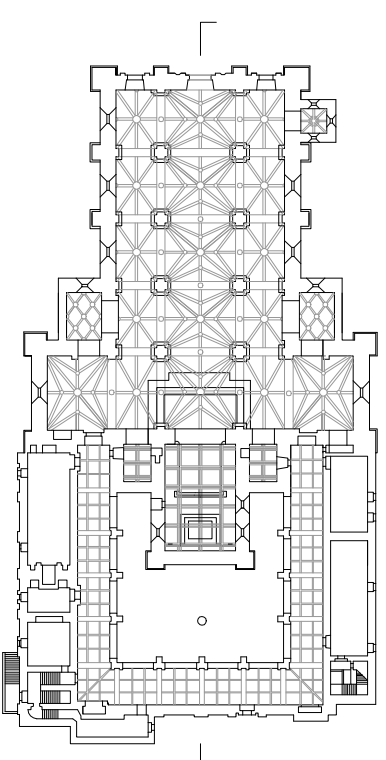
Escala 1:250

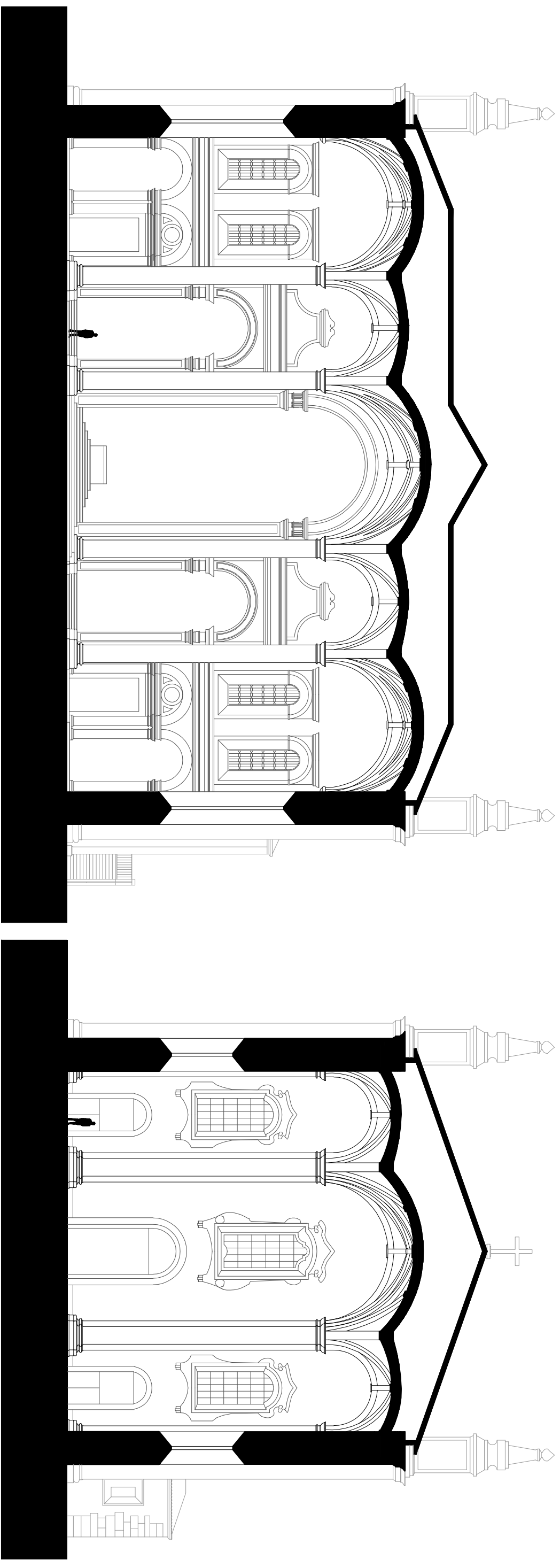
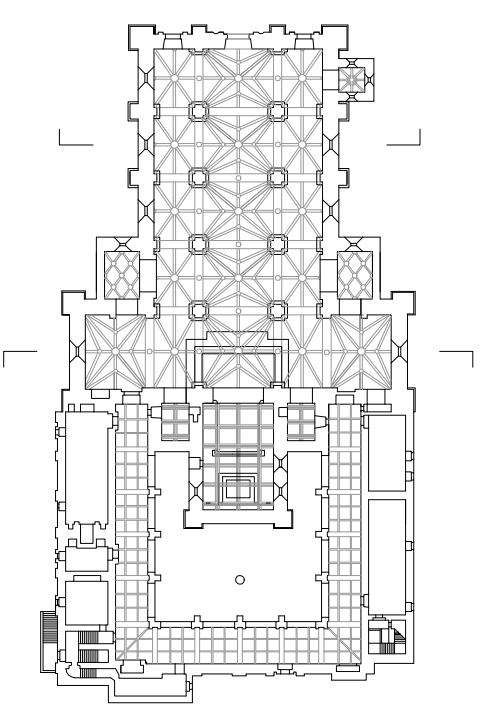
Folha 1/5



0 1 2 5 10 braças







0 1 2 5 10 bragas